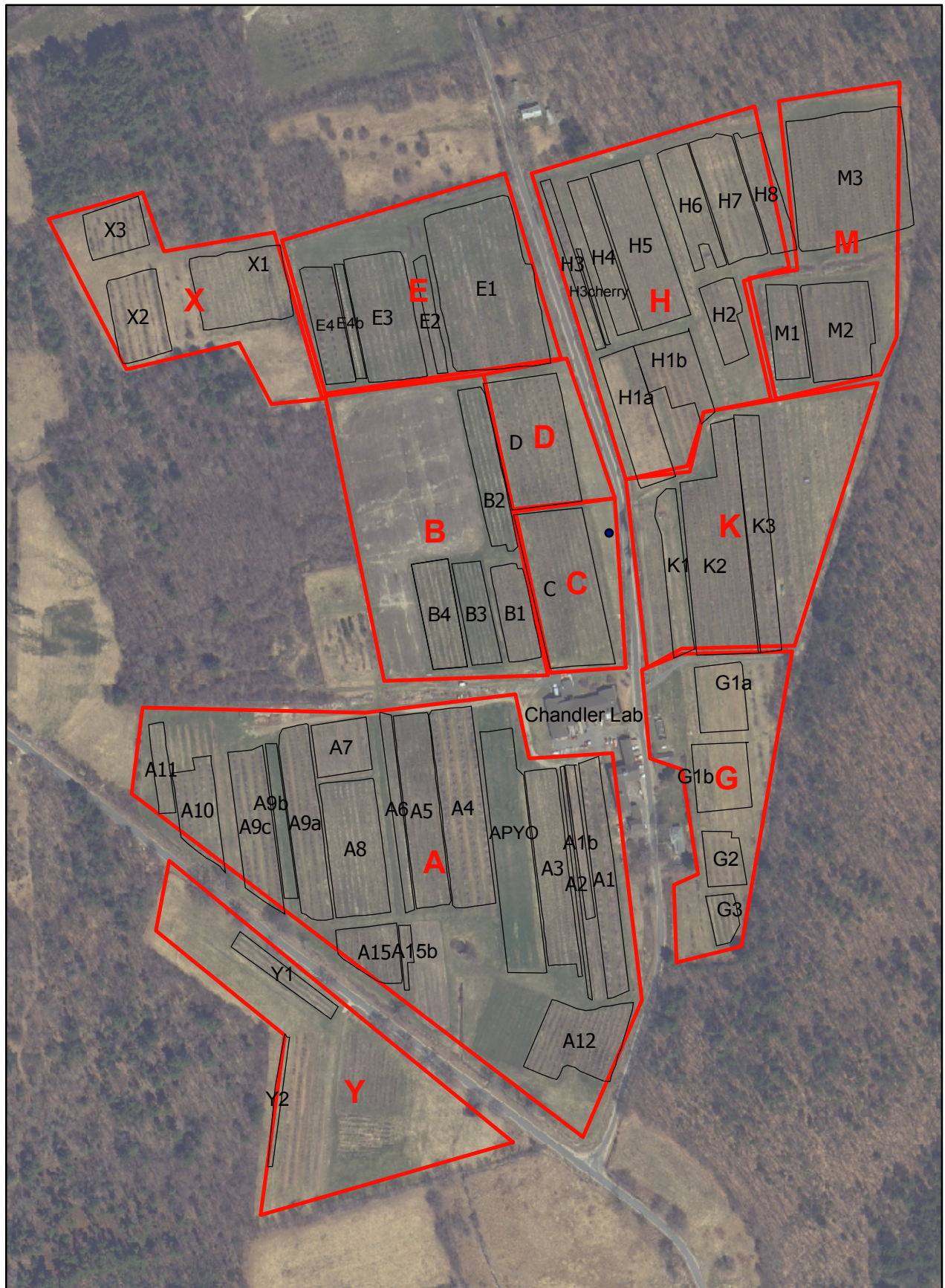




UMass Cold Spring Orchard Blocks March, 2007



Block	GIS Acres	Crop
A1	0.76	apple
A1b	0.21	apple
A2	0.14	apple
A3	0.94	apple
APYO	1.35	apple
A4	1.25	apple
A5	1.01	apple
A6	0.31	apple
A7	0.43	apple
A8	1.09	apple
A9a	0.93	apple
A9b	0.29	apple
A9c	0.8	apple
A10	1.05	apple
A11	0.21	apple
A12	0.88	apple
A15	0.44	cherry
A15b	0.08	cherry
<i>A total</i>	<i>12.2</i>	
B1	0.47	apple
B2	0.64	apple
B3	0.45	apple
B4	0.57	apple
<i>B total</i>	<i>2.1</i>	
<i>C total</i>	<i>1.6</i>	apple
<i>D total</i>	<i>1.4</i>	apple
E1	2.3	apple
E2	0.21	apple
E3	1.11	apple
E4	0.54	pear
E4b	0.16	pear
<i>E total</i>	<i>4.3</i>	
G1a	0.47	grape
G1b	0.54	grape
G2	0.56	plum
G3	0.18	plum
<i>G total</i>	<i>1.8</i>	
H1a	0.75	peach
H1b	0.59	peach
H2	0.37	peach, plum
H3	0.27	apple
H3cherry	0.06	cherry
H4	0.52	peach
H5	1.23	apple
H6	0.57	apple
H7	0.79	apple
H8	0.50	apple
<i>H total</i>	<i>5.7</i>	
K1	0.50	peach
K2	1.64	apple
K3	1.69	apple
<i>K total</i>	<i>3.8</i>	
M1	0.46	apple
M2	0.93	peach
M3	2.18	apple
<i>M total</i>	<i>3.6</i>	
X1	0.99	apple
X2	0.65	apple
X3	0.42	apple
<i>X total</i>	<i>2.1</i>	
Y1	0.34	grape
Y2	0.12	other
<i>Y total</i>	<i>0.5</i>	

April, 2007