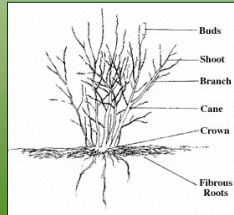


## Blueberries

### General Information

- *Morphology* - Woody perennial plant
- Hardy
- Very shallow root system
- Roots lack root hairs
  - Need soils w/ high OM
  - Mycorrhizae



## Blueberries

### Types of blueberries

- Highbush
  - *Vaccinium corymbosum*
- Lowbush/Wild
  - *Vaccinium angustifolium*
- Half-high
  - hybrid of highbush and lowbush
  - Northsky, Northblue, Northcountry*



## Blueberries

### Landscape Value:

- Ornamental flowers
- Edible fruit
- Fall foliage color
- Mixed plantings - soil requirements like azaleas, rhododendrons.
- Ground covers



## Blueberries



Soil	well drained
	sandy loam
pH = 4.5 - 5.5	SOM > 5%
Site	full sun
	access to water



## Blueberries



**Location,  
Location,  
Location!**



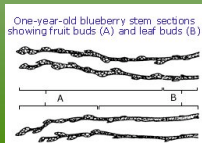
## Planting

- Prepare the site one year before planting the bushes.
  - Till in or remove all existing weeds or brush
  - Check and adjust soil pH
  - Incorporate organic matter
  - Ensure proper drainage



## Planting

- Use containerized older plants for small planting
- Bare root plants - prune back half the top growth to allow roots to establish
- Mulch with aged sawdust or chips
- Rub off all flower buds the first year



## Nutrition

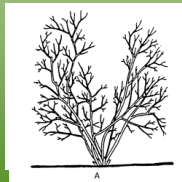
- If soil properly prepared, only nitrogen required annually.
- No fertilize first year, as the root system is very susceptible to root burning.
- In later years, always fertilize at bloom and repeat one month later.



## Pruning

### Steps in Pruning Established Bushes

1. Remove broken or weak canes
2. Remove canes older than 5 – 8 years
3. Keep 6-10 canes of mixed ages
4. Keep only 2-3 best new canes each year
5. Open the interior the bush to let in sunlight and improve air circulation



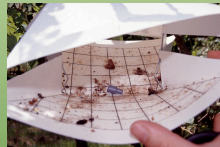
## Insect Pests

### Cranberry Fruitworm

- Moths lay eggs on calyx end of green fruit
- Larvae hatch and tunnel in
- Larvae web cluster of fruit together



## Cranberry Fruitworm



## Cranberry Fruitworm

### Management:

- Trap out or Mating Disruption w/ pheromones
- Pick out infested fruit
- Spray insecticides at 'berry touch'



## Blueberry Maggot



- Invade field as fruit begins to ripen
- Females lay single egg in fruit/mark
- Each female can lay 100 eggs



## Blueberry Maggot



Oviposition Markings

Larvae in Fruit



## Blueberry Maggot



### Yellow Sticky Traps

- Bait
- Attracts male and female flies
- One per bush can trap out
- Spray at first occurrence



## Fruit Rots



Botrytis Blight



Mummyberry



## Fruit Rots

### Management:

- Good air circulation
- Sanitation
  - clean up inoculum from beneath plants (fruit/leaves)
- Fungicides



## Stem Blights and Cankers



Fusicoccum Canker



Phomopsis Stem Blight



## Stem Blights and Cankers

### Management:

- Good air circulation
- Sanitation
  - clean up inoculum from beneath plants (prunings)
- Avoid late N-fertilization
- Fungicides



## Any Questions?

